	VISTA PROCESSED FOODS PVT.LTD.	V/SQMS/4/03	
		ISSUE DATE:	July 2005
Contingency Plan for McDonald's India		REVISION DATE:	18/06/2015
		REVISION NO.	03
Fresh Produce		PAGE NO.	Page 1 of 41



**VISTA PROCESSED FOODS PRIVATE LIMITED- TALOJA -
MUMBAI –INDIA.
FRESH PRODUCE
CONTINGENCY PLAN**



Location: Noida (North)
Commissioned: 2008

Location: Bangalore (South)
Commissioned: 2011

**PREPARED BY: CRISIS MANAGEMENT TEAM
AUTHORIZED BY:
BHUPINDER SINGH**



	VISTA PROCESSED FOODS PVT.LTD.	V/SQMS/4/01	
		ISSUE DATE:	July 2005
Contingency Plan for McDonald's India		REVISION DATE:	18/06/2015
Fresh Produce		REVISION NO.	03
		PAGE NO.	Page 2 of 41


TABLE OF CONTENTS

SR. #	Sub. #	TITLE	Page No
		AMENDMENT LOG	3
1.0		EXECUTIVE SUMMARY	4 & 5
2.0		VISTA PROCESSED FOODS - PLANT PROFILE	6
3.0		VISTA PROCESSED FOODS - KEY CONTACTS	7
4.0		SUPPLY CHAIN FLOW CHART	8
5.0		RISK ASSESSMENT	
6.0		RAW MATERIAL PROCUREMENT	9 & 10
	<u>6.1</u>	FRESH VEGETABLES PROCUREMENT <ul style="list-style-type: none"> ➤ Overview ➤ Procurement Decision Flow ➤ Suppliers Contacts 	11-14
	<u>6.2</u>	SANITIZERS PROCUREMENT <ul style="list-style-type: none"> ➤ Overview ➤ Procurement Decision Flow ➤ Suppliers Contacts 	15-17
	<u>6.3</u>	PROCESSING PROCUREMENT <ul style="list-style-type: none"> ➤ Overview ➤ Procurement Decision Flow ➤ Suppliers Contacts 	18-22
	<u>6.4</u>	CHILLED STORAGE PROCUREMENT <ul style="list-style-type: none"> ➤ Overview ➤ Procurement Decision Flow ➤ Suppliers Contacts 	23-25
	<u>6.5</u>	PACKAGING PROCUREMENT <ul style="list-style-type: none"> ➤ Overview ➤ Procurement Decision Flow ➤ Suppliers Contacts 	26-28
	<u>6.6</u>	FREIGHT MANAGEMENT <ul style="list-style-type: none"> ➤ Overview ➤ Procurement Decision Flow ➤ Suppliers Contacts 	29-31
7.0		The key contacts for McDonald's	32
8.0		import trade and tariffs matrix.	33-36
9.0		Seeds Procurement	37
		Format – Contingency Plan Test	38

	VISTA PROCESSED FOODS PVT.LTD.	V/SQMS/4/01	
		ISSUE DATE:	July 2005
		REVISION DATE:	18/06/2015
Contingency Plan for McDonald's India		REVISION NO.	03
Fresh Produce		PAGE NO.	Page 3 of 41

AMENDMENT LOG

SR. #	Rev. #	Rev. Date	Earlier Matter	Revised Matter
01	00	10/09/2012		Added new facilities of vista in plans
02	01	29/01/2014		Revised (Added contingency plan test program & format)
03	02	07/10/2015		Revised contact list

	VISTA PROCESSED FOODS PVT.LTD.	V/SQMS/4/01	
		ISSUE DATE:	July 2005
Contingency Plan for McDonald's India		REVISION DATE:	18/06/2015
		REVISION NO.	03
Fresh Produce		PAGE NO.	Page 4 of 41


1.0 EXECUTIVE SUMMARY

Vista Processed Foods, India currently supplies Fresh Produce products to McDonald's in North, West and South Region (except Hyderabad) to CPRL, HRPL & RFPL

As a supplier to McDonalds, Vista is committed to maintain uninterrupted supply of Fresh Produce Products and has developed contingency plan for continuous supply.

Vista Foods purchases raw materials from pre-approved farms in India. All such farms are GAP implementation.


In the event that Vista Foods fails to provide fresh products for their existing markets that is McDonald's India West, North & South (except Hyderabad):

	VISTA PROCESSED FOODS PVT.LTD.	V/SQMS/4/01	
		ISSUE DATE:	July 2005
Contingency Plan for McDonald's India		REVISION DATE:	18/06/2015
Fresh Produce		REVISION NO.	03
		PAGE NO.	Page 5 of 41


Options :

Sr.#	Products	Production Line	Contingency Line	Remarks
West				
1	Shredded Lettuce	West M 78, Taloja	Avon, Safal, Cremica Noida	FG will be airlifted and available shelf life will be reduced.
2	Shredded Onion	West M 78, Taloja	Avon, Safal, Cremica Noida	FG will be airlifted and available shelf life will be reduced.
3	Tomato	West M 78, Taloja	Avon, Safal, Cremica Noida	FG will be airlifted and available shelf life will be reduced.
South				
1	Shredded Lettuce	Avon, Safal	West M 78, Taloja, Cremica Noida	FG will be airlifted and available shelf life will be reduced.
2	Shredded Onion	Avon, Safal	West M 78, Taloja, Cremica Noida	FG will be airlifted and available shelf life will be reduced.
3	Tomato	Avon, Safal	West M 78, Taloja, Cremica Noida	FG will be airlifted and available shelf life will be reduced.
North				
1	Shredded Lettuce	Avon, Safal, Cremica Noida	West M 78, Taloja, Avon, Safal	FG will be airlifted and available shelf life will be reduced.
2	Shredded Onion	Avon, Safal, Cremica Noida	West M 78, Taloja, Avon, Safal	FG will be airlifted and available shelf life will be reduced..
3	Tomato	Avon, Safal, Cremica Noida	West M 78, Taloja, Avon, Safal	FG will be airlifted and available shelf life will be reduced.

The following matrix shows Vista's Fresh Processing locations and contingency options:

	VISTA PROCESSED FOODS PVT.LTD.	V/SQMS/4/01	
		ISSUE DATE:	July 2005
Contingency Plan for McDonald's India		REVISION DATE:	18/06/2015
Fresh Produce		REVISION NO.	03
		PAGE NO.	Page 6 of 41


Sr.#	Region	Type	North G. Noida	West Taloja (M-78)	South Hosekotae Safal
1	Raw Material	Lettuce	Local Movement from 1 location to other Import from Thailand	Local Movement from 1 location to other Import from Thailand	Local Movement from 1 location to other Import from Thailand
2	Packing Material	Poly Bag	Local Movement from 1 location to other Import from USA / China	Local Movement from 1 location to other Import from USA / China	Local Movement from 1 location to other Import from USA / China
	Processing	Contigency-1	Avon, Safal South	Avon, Safal South	West,M 78, Taloja
		Contigency-2	West,M 78, Taloja	Cremica Noida	Cremica Noida


	VISTA PROCESSED FOODS PVT.LTD.	V/SQMS/4/01	
		ISSUE DATE:	July 2005
		REVISION DATE:	18/06/2015
Contingency Plan for McDonald's India		REVISION NO.	03
Fresh Produce		PAGE NO.	Page 7 of 41

1. These plants have enough capacity to meet store requirements and are already approved by McDonald's India
2. Finished products can be airlifted and supplied to stores.
3. Similarly, raw material can be supplied from one plant to another during RM contingency.

The contingency plan outlines a range of issues and variables which need to be considered before a course of action is decided. These critical points are demonstrated in the Decision Making Flow Charts, where Vista task force team with the team leader will determine the proper course of action depending on the specific circumstances or the critical Incident.

The attached plan demonstrates the contingencies to be implemented if a critical incident develops to the stage where supply is interrupted.

	VISTA PROCESSED FOODS PVT.LTD.	V/SQMS/4/01	
		ISSUE DATE:	July 2005
		REVISION DATE:	18/06/2015
Contingency Plan for McDonald's India		REVISION NO.	03
Fresh Produce		PAGE NO.	Page 8 of 41

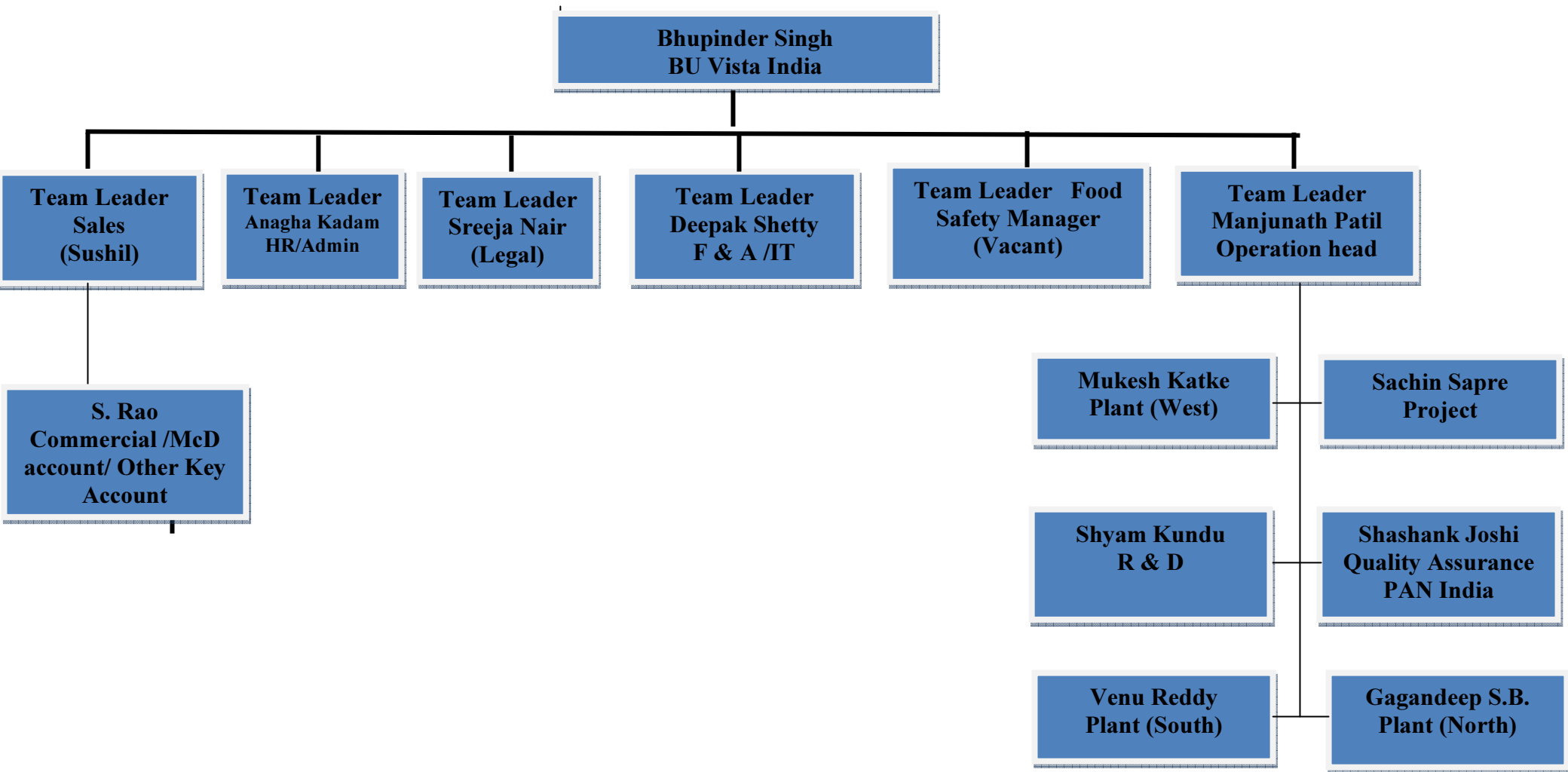
	VISTA PROCESSED FOODS PVT.LTD.	V/SQMS/4/01	
		ISSUE DATE:	July 2005
Contingency Plan for McDonald's India		REVISION DATE:	18/06/2015
Fresh Produce		REVISION NO.	03
		PAGE NO.	Page 9 of 41


2.0 VISTA FOODS PLANT PROFILE

The table below shows the organization chart

Vista Foods Plant Profile


The table below shows the organization chart of the Vista Foods plant.



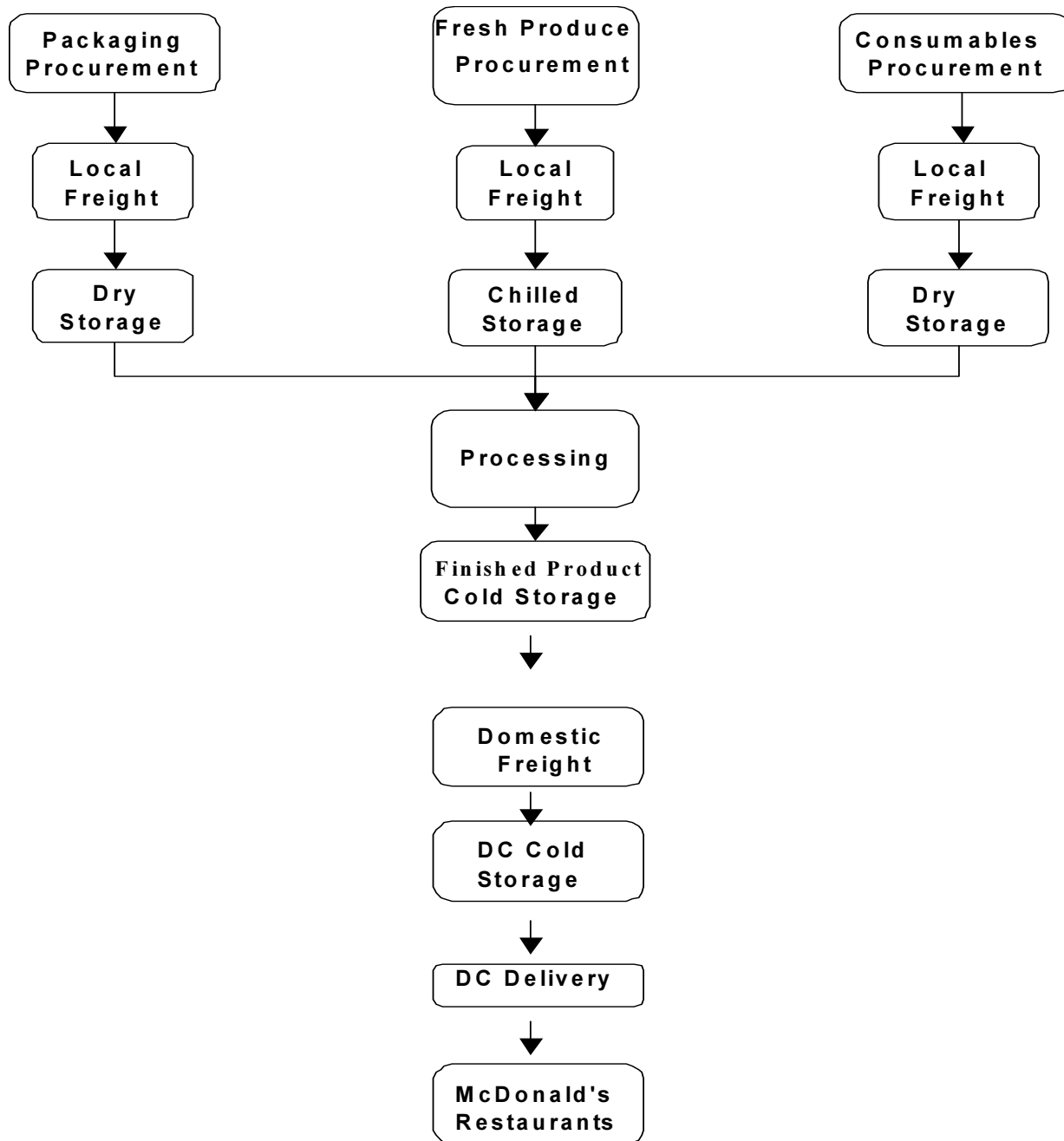
	VISTA PROCESSED FOODS PVT.LTD.	V/SQMS/4/01	
		ISSUE DATE:	July 2005
Contingency Plan for McDonald's India		REVISION DATE:	18/06/2015
		REVISION NO.	03
Fresh Produce		PAGE NO.	Page 10 of 41


3.0 THE KEY CONTACTS FOR VISTA FRESH PROCESS UNITS ARE LISTED IN THE FOLLOWING TABLE.

SR. #	NAME	TITLE	MOBILE PHONE	E-MAIL
1.	Bhupinder Singh	C.E.O	98204 29270	bhupinder-singh@vista-osi-group.com
2.	Manjunath Patil	Team leader SCM	9820088342	manjunath.patil@vista-osi-group.com
3.	Anagha Kadam	Team Leader- HR/Admin	9833977525	anagha@vista-osi-group.com
3.	Sreeja Nair	Team Leader –Legal	9930004492	sreeja@vista-osi-group.com
4.	Deepak Shetty	Team Leader-F & A /IT	9930898371	deepak@vista-osi-group.com
5.	Mukesh	Operation Head – Vista West	98200 88548	mukesh-katke@vista-osi-group.com
6.	S.S. Kundu	R & D Head	9930203383	skundu@vista-osi-group.com
7.	S. Rao	Commercial/ McD account	9820088124	subramanya@vista-osi-group.com
8.	Sachin Sapre	Project	96199000323	sachinsapre@vista-osi-group.com
9.	Shashank Joshi	Pan India QA	967670832	shashank@vista-osi-group.com
10.	Venu Gopal Reddy	Plant Manager – Vista South	9885088818	venu@vista-osi-group.com
1.	Neeraj Kumar	Team leader fresh produce	9833474642	neeraj@vista-osi-group.com
1.	Nitin Paradkar	Manager – West Plant	9930264155	nitin@vista-osi-group.com
2.	Rohit Sharma	Regional Manager- North Plant	9818273360	rohit@vista-osi-group.com
3.	Nanja Reddy	Manager – South Plant	9980211839	nanja@vista-osi-group.com
4.	Amol Patil	Sr. Officer- QA	9702420304	Amol@vista-osi-group.com
5.	Vivekanand	Manager-Fresh Produce	9967048844	vivekanad@vista-osi-group.com

	VISTA PROCESSED FOODS PVT.LTD.	V/SQMS/4/01	
		ISSUE DATE:	July 2005
Contingency Plan for McDonald's India		REVISION DATE:	18/06/2015
Fresh Produce		REVISION NO.	03
		PAGE NO.	Page 11 of 41

4.0 SUPPLY CHAIN FLOW CHART



	VISTA PROCESSED FOODS PVT.LTD.	V/SQMS/4/01	
		ISSUE DATE:	July 2005
Contingency Plan for McDonald's India		REVISION DATE:	18/06/2015
		REVISION NO.	03
Fresh Produce		PAGE NO.	Page 12 of 41


5.0 RISK ASSESSMENT

	Supply Chain Point	Risk	Level	Possible Cause	Possible Effect	Existing Controls
6.1	RAW VEGETABLES PROCUREMENT / FRESH VEGETABLE PROCUREMENT	Short Supply Or No supply	Med. (seasonal)	<ul style="list-style-type: none"> Forecast too conservative or Inaccurate forecast Bad weather and farm spoilage Seeds shortage Water shortage or low rainfall 	<ul style="list-style-type: none"> Reduction of inventory holdings Inability to process Stock out situation Higher cost 	<ul style="list-style-type: none"> Multiple sources of farm supply with integrated systems Three McDonald's approved suppliers in each region Alternate seeds variety
			Low. High	<ul style="list-style-type: none"> Water shortage Outbreak of any diseases Natural disaster etc 	<ul style="list-style-type: none"> Stock out situation Stock out situation 	<ul style="list-style-type: none"> Multiple growing location Water conservation Prophylactic chemical application Developed a contingent grower Import of raw produce
6.2	SANITIZER PROCUREMENT	Non availability	Low	Short supply	<ul style="list-style-type: none"> Product shortage 	<ul style="list-style-type: none"> Source from other supplier
			Low	Stand by sanitizer		Standby sanitizer. Liquid chlorine.
6.3	PROCESSING	Inability to process	Low	Fire	<ul style="list-style-type: none"> Plant closure Stock out situation 	<ul style="list-style-type: none"> Processing in North /South Alternate locations
			Low	Equipment /machinery break down. Power/water shortage.	<ul style="list-style-type: none"> Stock out situation 	<ul style="list-style-type: none"> In-house and outsourced maintenance program Backup equipments and spares
			Low	Raw material rejection	<ul style="list-style-type: none"> Stock out situation 	<ul style="list-style-type: none"> Buffer stock or contingent source of supply for raw materials
			Low	License revoked by Govt. authorities	<ul style="list-style-type: none"> Plant closure Stock out situation 	<ul style="list-style-type: none"> Compliance program in place verified by regular audits Source of FG from other region
			Med.	Labor shortage and labor unrest	<ul style="list-style-type: none"> Plant closure Stock out situation 	<ul style="list-style-type: none"> Source of FG from other region
6.4	CHILLED STORAGE CAPACITY	Lack of capacity	Low	Fire	<ul style="list-style-type: none"> Product rejections Stock out situation 	<ul style="list-style-type: none"> Storage in multiple locations Multiple suppliers
			Low	Equipment break down	<ul style="list-style-type: none"> Product rejections Stock out situation 	<ul style="list-style-type: none"> Preventive maintenance Backup equipments/ spares
			Low	Chiller space shortage	<ul style="list-style-type: none"> Production interruption Stock out situation 	<ul style="list-style-type: none"> Multiple storage service providers
		Low	Disruption to plant production	Fire, equipment breakdown, labor strike.	<ul style="list-style-type: none"> Interruption in supply Stock out situation 	<ul style="list-style-type: none"> Multiple sources of supply Mandatory safety level for finished product and major raw material



VISTA PROCESSED FOODS PVT.LTD.	V/SQMS/4/01	
	ISSUE DATE:	July 2005
Contingency Plan for McDonald's India	REVISION DATE:	18/06/2015
	REVISION NO.	03
Fresh Produce	PAGE NO.	Page 13 of 41

	Supply Chain Point	Risk	Level	Possible Cause	Possible Effect	Existing Controls
		Product shortage /contamination / disruption to plant production	Low	Chemical contamination, plant breakdown, foreign object, labor unrest, etc	<ul style="list-style-type: none"> • Interruption in supply & stock out situation 	1. Multiple sources of supply and higher inventory days
6.5	PACKAGING MATERIAL PROCUREMENT	Packaging quality problems	Low	Out of specification	<ul style="list-style-type: none"> • Stock out situation 	<ul style="list-style-type: none"> • High inventory • Certificate of Analysis for every shipment
		Packaging contamination	Low	Lapse in supply chain control	<ul style="list-style-type: none"> • Stock out situation 	<ul style="list-style-type: none"> • Supplier development program
		Disruption to plant production	Low	Fire, equipment breakdown, labor strife	<ul style="list-style-type: none"> • Interruption in supply • Stock out situation 	<ul style="list-style-type: none"> • Multiple sources of supply • Mandatory safety level
6.6	FREIGHT MANAGEMENT	Disruption to inbound materials	Low	Accidents Road closure	<ul style="list-style-type: none"> • Delivery of raw materials interrupted • Stock out situation 	<ul style="list-style-type: none"> • Multiple sources of supply • Alternative transport options (by air, by rail)

	VISTA PROCESSED FOODS PVT.LTD.	V/SQMS/4/01	
		ISSUE DATE:	July 2005
Contingency Plan for McDonald's India		REVISION DATE:	18/06/2015
		REVISION NO.	03
Fresh Produce		PAGE NO.	Page 14 of 41


6.0 RAW MATERIAL PROCUREMENT

6.1 RAW VEGETABLE PROCUREMENT:

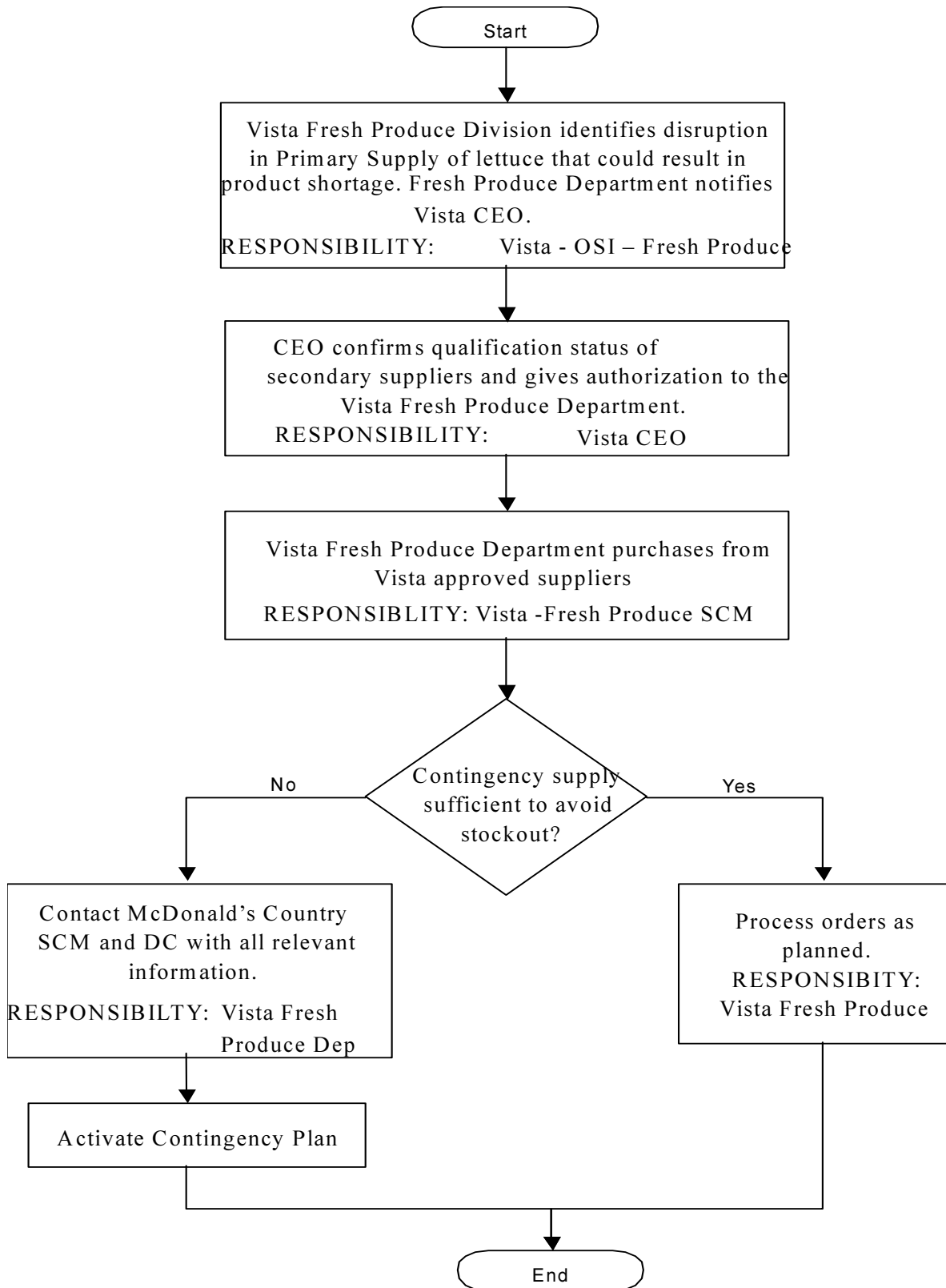
over view


The following risks may cause short supply of Iceberg Lettuce for processing at Vista -Mumbai G. Noida and Bangalore depending on the duration, may lead to stock out situation at the DC and McDonald's restaurants.

1. Inaccurate forecasting or sudden surge in usage
2. Seeds stock out
3. Heavy rainfall affecting the standing crop
4. Fluctuation in weather: high variation in day and night temperatures
5. Disease and pest outbreak on the field
6. Strike labor / transportation / Floods / Earthquake /Fire etc.

	VISTA PROCESSED FOODS PVT.LTD.	V/SQMS/4/01	
		ISSUE DATE:	July 2005
Contingency Plan for McDonald's India		REVISION DATE:	18/06/2015
		REVISION NO.	03
Fresh Produce		PAGE NO.	Page 15 of 41

FRESH VEGETABLES PROCUREMENT DECISION FLOW



	VISTA PROCESSED FOODS PVT.LTD.	V/SQMS/4/01	
		ISSUE DATE:	July 2005
Contingency Plan for McDonald's India		REVISION DATE:	18/06/2015
Fresh Produce		REVISION NO.	03
		PAGE NO.	Page 16 of 41

Contingency Plan

The contingency plan is to maintain various approved suppliers who can be used if there is a disruption of supply from the main source. Vista Foods today sources lettuce & tomatoes from approved suppliers and all suppliers can scale up to meet the growing demand. Each of them is in a position to meet the requirements of Vista if in case one of the suppliers fails to meet the requirements. These requirements can be met for a limited period since the growers will have small buffer.

Region	Type of Raw Material	Approved Supplier	Secondary (contingency) supplier
1. West	Lettuce	Essar Agrotech Ltd	Amar Agro, Shahabad
		Green Earth Produce Pvt Ltd, Ooty	Amar Him Agro, Kullu-Manali
	Onion Tomatoes	Namrata Traders	Malgudi Traders
		Namrata Traders	Malgudi Traders
	Other Vegetables	Kay bee export	
		Namrata Traders	Green Earth Produce Pvt Ltd, Ooty
	Malgudi Traders		
2. South	Lettuce	Green Earth Produce Pvt Ltd, Ooty	Essar Agrotech Ltd, Amar Agro Meena Agritech
	Onion	Green Earth Produce Pvt Ltd, Ooty	Namrata Traders
	Tomatoes	Green Earth Produce Pvt Ltd, Ooty	Namrata Traders
	Other Vegetables	Green Earth Produce Pvt Ltd, Ooty	Namrata Traders
3. North	Lettuce	Amar Agro Shahbad	Green Earth Produce Pvt Ltd, Ooty
		Amar Him Agro – Kulu Manali	Essar Agrotech Ltd
		Meena Agritech , Gurgaon & Kullu manali	
	Onion Tomatoes Other Vegetables	Chirag Agro Fresh/GMT	Namrata Traders
		Chirag Agro Fresh/GMT	Amar Agro
		Chirag Agro Fresh/GMT	Ahuja Vegetables

Raw Vegetable Suppliers Contacts

		Fresh Vegetables Procurement					
Region	Type of raw vegetable	Company	Contact Person	Contact Numbers	Backup Contact	Contact Numbers	Landline Number
WEST	Raw Lettuce	Essar Agrotech Pvt Ltd	Mr. Shewale Mr. S.M. Reddy	9823316225 9823316201	Mr. Kamlesh	9823316200	0211-4286062
		Green earth fresh produce Pvt ltd	Mr. Manish Mr. Kartik	9487963208 9442653166	Mr. Maghesh	9443339674	0423-2221196
		Namrata Traders	Mrs.Namita	9833530479	Mr. Kiran	9819212718	022-24329597
	Raw Onion	Malgudi Traders			Mr. Arun	9594405550	



VISTA PROCESSED FOODS PVT.LTD.

V/SQMS/4/01

ISSUE DATE:

July 2005

REVISION DATE:

18/06/2015

Contingency Plan for McDonald's India

REVISION NO.


03

Fresh Produce

PAGE NO.

Page 17 of 41

	Raw Tomatoes	Namrata Traders	Mrs. Namita	9833530479	Mr. Kiran	9819212718	022-24329597
		Kay-Bee Exports	Mr. Kushal	9870405667	Mrs.Vaishali	022 4157 8975	022-41259800
	Other Vegetable	Namrata Traders	Mrs. Namita	9833530479	Mr. Kiran	9819212718	022-24329597
		Malgudi Traders			Mr. Arun	9594405550	
SOUTH	Raw Lettuce	Green earth fresh produce	Mr. Manish Mr. Kartik	9487963208 9442653166	Mr. Magesh	9443339674	4232221196
		Essar Agrotech Pvt Ltd	Mr. Shewale Mr. S.M. Reddy	9823316225 9823316201	Mr. Kamlesh	9823316200	2114286062
	Raw Onion	Green earth fresh produce Pvt ltd	Mr. Manish Mr. Kartik	9487963208 9442653166	Mr. Maghesh	9443339674	4232221196
		Shanta Kumar	Mr. Shanta	9916896602			
	Raw Tomatoes	Green earth fresh produce Pvt ltd	Mr. Manish Mr. Kartik	9487963208 9442653166	Mr. Maghesh	9443339674	4232221196
		Shanta Kumar	Mr. Shanta	9916896602			
	Other Vegetables	Green earth fresh produce Pvt ltd	Mr. Manish Mr. Kartik	9487963208 9442653166	Mr. Maghesh	919443339674	4232221196
		Shanta Kumar	Mr. Shanta	9916896602			
NORTH	Raw Lettuce	Amar Agro	Mr. Binwant	9816532710			
		Amar Him Agro	Mr. Jitender	9418091616	Mr. Binwant	9816532710	
	Raw Onion	Meena Agritech	Mr. Gopal Ojha	9650096000	Mr. Sagar	9816484651	
		Chirag Agro Fresh/GMT	Mr. Luxmi Dutt	9999309161	NA	9212709161	
	Raw Tomatoes	Namrata Traders	Mrs. Namita	9833530479			
		Chirag Agro Fresh/GMT	Mr. Luxmi Dutt	9999309161	NA	9212709161	
		Amar Agro	Mr. Binwant	9816532710			
	Other Vegetable	Chirag Agro Fresh/GMT	Mr. Luxmi Dutt	9999309161	NA	9212709161	
Ahuja							

	VISTA PROCESSED FOODS PVT.LTD.	V/SQMS/4/01	
		ISSUE DATE:	July 2005
		REVISION DATE:	18/06/2015
Contingency Plan for McDonald's India		REVISION NO.	03
Fresh Produce		PAGE NO.	Page 18 of 41

6.2 SANITIZER PROCUREMENT

over view

Risk


Sanitizing supply may be interrupted due to unforeseen market conditions, inaccurate forecasting, and packaging material quality problem or contamination. The following risks may materialize and cause stockout situation at Vista.

1. Sanitizer shortfall.
2. Brand closing.
3. Change in concentration.
4. Accident or fire at the processing plant.

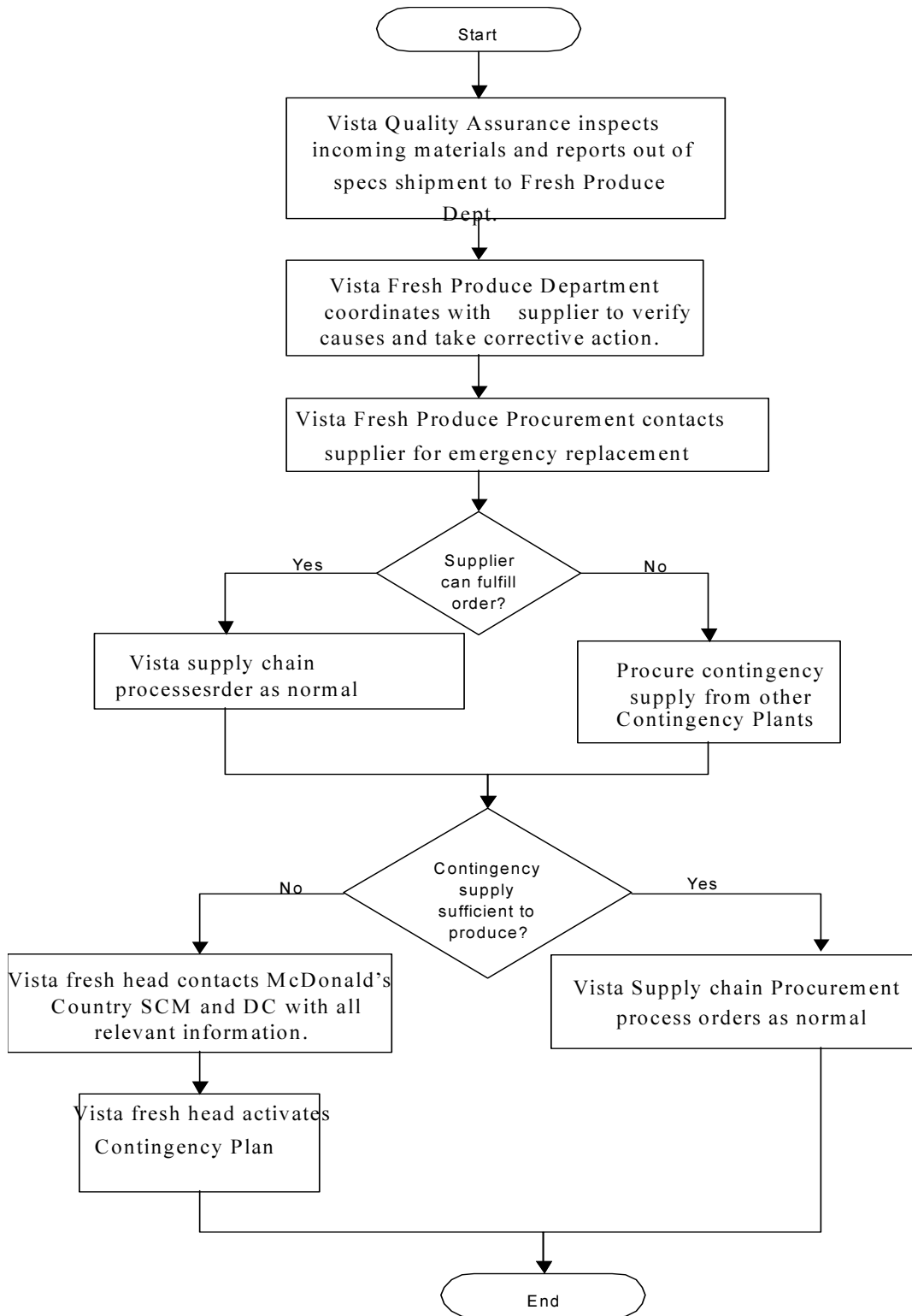
Risk mitigation includes having multiple suppliers with capabilities to produce and supply similar quality of sanitizers. Vista ensures product quality compliance through regular supplier facility audits, meetings and consultations. The suppliers keep mandatory safety stock for key raw material to avoid the supply shortage problem.


Sanitizer used is:

Chlorine tablets- SUMATAB, Johnson Diversey- Made

	VISTA PROCESSED FOODS PVT.LTD.	V/SQMS/4/01	
		ISSUE DATE:	July 2005
Contingency Plan for McDonald's India		REVISION DATE:	18/06/2015
		REVISION NO.	03
Fresh Produce		PAGE NO.	Page 19 of 41

SANITIZER PROCUREMENT DECISION FLOW




	VISTA PROCESSED FOODS PVT.LTD.	V/SQMS/4/01	
		ISSUE DATE:	July 2005
Contingency Plan for McDonald's India		REVISION DATE:	18/06/2015
		REVISION NO.	03
Fresh Produce		PAGE NO.	Page 20 of 41

Contingency Plan

In the event of a supply interruption from the brand, liquid chlorine is used, suppliers should be able to supply the chemical.

	<i>Region</i>	<i>Ingredient</i>	<i>Primary Supplier</i>	<i>Secondary(contingency) supplier</i>
1.	West	Sumatab- Chlorine tablets	Sealed Air	Datarica
		Chlorine – Liquid	Aarsha chemicals	Sunchem Chemical
2.	South	Sumatab- Chlorine tablets	Sealed Air	Datarica
3.	North	Sumatab- Chlorine tablets	Sealed Air	Datarica
		Chlorine – Liquid	Sagar Enterprises	

Company	Contact Person	Contact Numbers	Backup Contact	Contact Numbers	Landline
Sealed Air	Mr.Aditya	912266444222	Mrs.Kavita	919900252842	
Datarica					


	VISTA PROCESSED FOODS PVT.LTD.	V/SQMS/4/01	
		ISSUE DATE:	July 2005
		REVISION DATE:	18/06/2015
Contingency Plan for McDonald's India		REVISION NO.	03
Fresh Produce		PAGE NO.	Page 21 of 41

6.3 PROCESSING

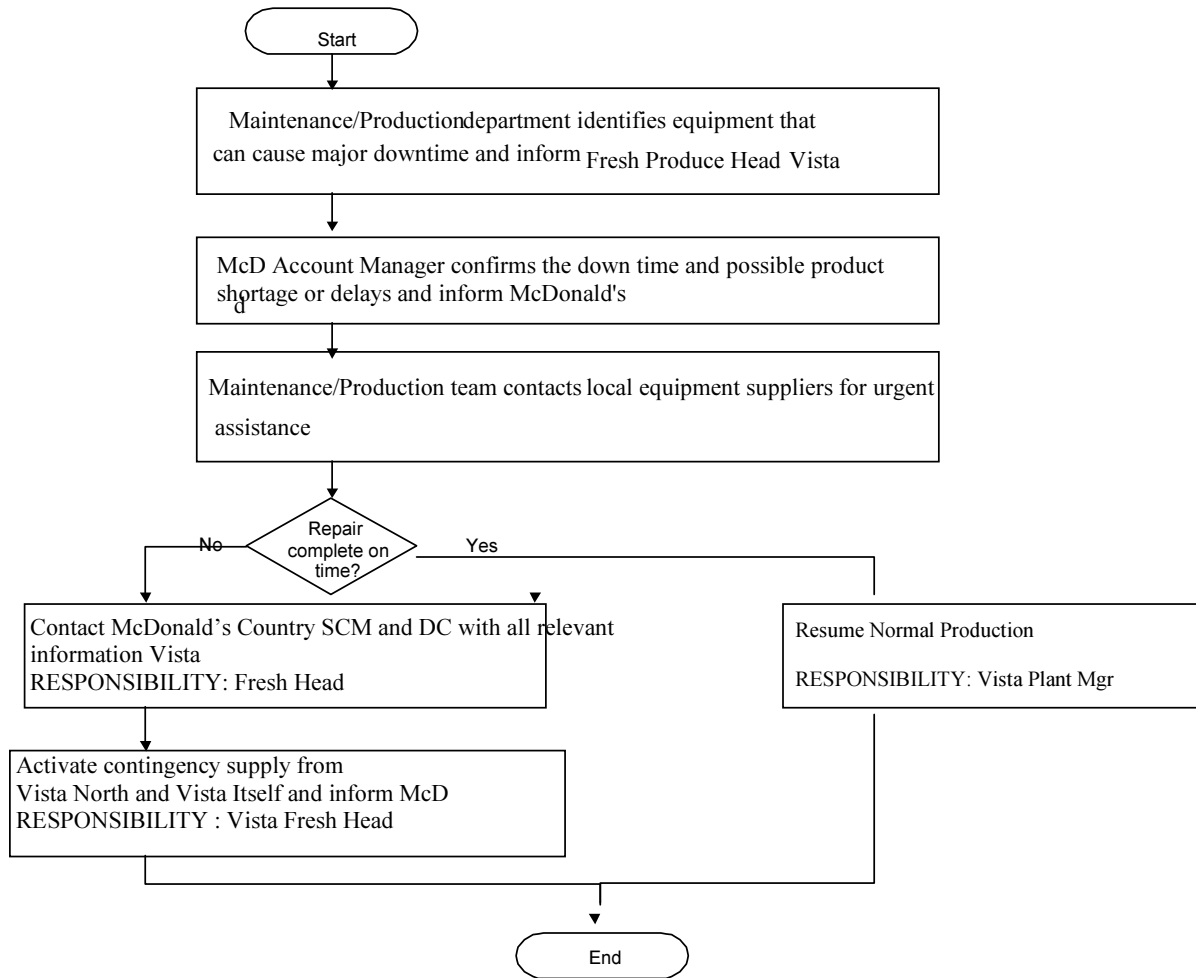
over view


Processing may be interrupted due to major breakdown such as

1. Electricity short supply / Blackout
2. Equipment break down
3. Refrigeration break down
4. Natural disasters: like earthquake, flood or fire may also prevent production.
Industrial unrest or labor strike etc.

	VISTA PROCESSED FOODS PVT.LTD.	V/SQMS/4/01	
		ISSUE DATE:	July 2005
Contingency Plan for McDonald's India		REVISION DATE:	18/06/2015
		REVISION NO.	03
Fresh Produce		PAGE NO.	Page 22 of 41

PROCESSING DECISION FLOW



	VISTA PROCESSED FOODS PVT.LTD.	V/SQMS/4/01	
		ISSUE DATE:	July 2005
Contingency Plan for McDonald's India		REVISION DATE:	18/06/2015
		REVISION NO.	03
Fresh Produce		PAGE NO.	Page 23 of 41


Contingency Plan

In the event that Vista Foods, south fails to manufacture any fresh produce products:

Region	Contingency: Plan-A	Contingency: Plan-B	Remark
West (M-78, Taloja)	M-75, Taloja (Frozen Plant)	Vista South	Contingency-A : Location has chilled water and storage only equipment need to move for production
		Vista North	
South (Safal, Hosekotai)	Madanapalli (Frozen Plant)	Vista West	Contingency-B : If one fresh produce plant gets affected, then other location can support supplies by road. The plant may have capacity limitation
		Vista West	
North (G. Noida)	Sirhind (Frozen Plant)	Vista West	


Response lead time: Based on prevailing situation both plan-A & B could move parallel

Region	Contingency	Day	Immediate measure	Lead time	Interim measure
West	Plan-A	0	Shifting of equipment and start up of operation	4 Hrs	Special delivery of product if delayed
		1	Regular production	1 day	Normal supplies
	Plan-B	0	Production at B'lore / Delhi	1 day	Dispatch of FG by Air for at least 1 day consumption [approx 500 Kg]
		1	Night shift production	36 Hrs	Dispatch by reefer truck from B'lore to Mumbai
			72 Hrs	Dispatch by reefer truck from Delhi to Mumbai	
South	Plan-A	0	Shifting of equipment and start up of operation	1 day	Special delivery of product if delayed
		1	Regular production	1 day	Normal supplies
	Plan-B	0	Production at Mumbai	1 day	Dispatch of FG by Air for at least 1 day consumption [approx 500 Kg]
		1	Night shift production	36 Hrs	Dispatch by reefer truck from Mumbai to B'lore
North	Plan-A	0	Shifting of equipment and start up of operation	1 day	Supply of raw lettuce & onion to the stores for 2 days consumption
		1	Operations at new location	1 day	Special delivery of product if delayed
		2	Regular production		Regular Supplies
	Plan-B	0	Production at Mumbai	12 Hrs	Dispatch of FG by Air for at least 1 day consumption [approx 500 Kg]
		1	Night production	12 Hrs	Dispatch of FG by Air for at least 1 day consumption [approx 500 Kg]

	VISTA PROCESSED FOODS PVT.LTD.	V/SQMS/4/01	
		ISSUE DATE:	July 2005
Contingency Plan for McDonald's India		REVISION DATE:	18/06/2015
Fresh Produce		REVISION NO.	03
		PAGE NO.	Page 24 of 41

Import Contingency Plan Fresh Products Contingency Plan Data Template (II)

(1)	(2)	(10A)	(10B)	(11A)	(11B)
Importing processing facility	Finished product	Which facility is your Contingency Supplier?	For which market of yours	You are Contingency Supplier for which Facility	To which market?
Vista Foods India	Shredded Lettuce, shredded onion & salad mix	Cremica Foods, Noida Vista Foods, Taloja, Mumbai, Vista Foods, G. Noida	south India	Cremica Foods, Noida Vista Foods, Taloja, Mumbai	Pan India
1.Name of facility 2.Fresh produce items produced by the facility 10A. Which facility is your current contingency supplier? 10B. And for which market of yours? 11A. You are contingency supplier to which facility? 11B. To which market?					

	VISTA PROCESSED FOODS PVT.LTD.	V/SQMS/4/01	
		ISSUE DATE:	July 2005
		REVISION DATE:	18/06/2015
Contingency Plan for McDonald's India		REVISION NO.	03
Fresh Produce		PAGE NO.	Page 25 of 41


Processing and Equipment Maintenance Contacts

These are the key contacts for the contingency plants within the country for Vista Foods – Mumbai & Vista Foods North (Cremica Foods, Noida, India)

Processing Alternative Plants						
Plant	Contact	Contact Numbers		Backup Contact	Contact Numbers	
Vista Foods (WEST)	Mr. Neeraj Kumar Mr. Mukesh Katke Mr. Nitin P	+91-9833474642 +91-9820088548 +91-9930264155 022 27402288	Mobile	Mr. Bhupinder Singh Mr. Manjunath Patil	+91-9820429270 +91-9820088342	Office
Vista Foods (South)	Mr Neeraj Kumar Mr. Nanja Reddy Mr. Kishor	+91-9833474642 +91-9980211839	Mobile	Mr. Bhupinder Singh Mr. Manjunath Patil	+91-9820429270 56162522 (D) +91-9820088342	Office
Vista Foods (NORTH)	Mr .Neeraj Kumar Mr Rohit Mr Chaudhari	+91-9833474642 +91-9818273360 +91-9373550910	Mobile	Mr. Bhupinder Singh Mr. Manjunath Patil	+91-9820429270 56162522 (D) +91-9820088342	Office

The following vendors and engineers support Vista equipment and plant maintenance program:

Region	Company	Supplier	Contact Person	Contact number	Backup Contact	Contact Number
West	Shredder	Urschel	Mr. Santhosh	+91-9822885262	Mr. Nitin	2064001712
	Power	MSEB	Jr. Engineer Taloja	+22-27412490	Sr. Engineer	+22-27896730
	Water	MIDC	Jr. Engineer Taloja	+22-27402458	Sr. Engineer	+22-27402465
South	Shredder	Ecocosmos	Mr. Ashish Chaudhry	91+9810138678		
	Power	SAFAL	Safal Engineer Safal E and O dept	9167670832 080-28458360 080-28458360	Sr. Engineer Executive	080-28458360 Extn-213 080-28458360 extn-212
North	Shredder	FAM	Mr. Janardhan	91+9945451419	Mr. Brungesh	91+9742066813
	Power	NPCL	Jr. Engineer	91+9811507123	Sr. Engineer	91+9958076000

	VISTA PROCESSED FOODS PVT.LTD.	V/SQMS/4/01	
		ISSUE DATE:	July 2005
		REVISION DATE:	18/06/2015
Contingency Plan for McDonald's India		REVISION NO.	03
Fresh Produce		PAGE NO.	Page 26 of 41

6.4 CHILLED STORAGE CAPACITY

over view

Risk

Supply line can be interrupted due to


1. Loss of storage capacity because of fire, power breakdown.
2. Equipment breaks down
3. Shortage of storage space due to excessive inventory
4. Less storage capacity at Plant

Contingency Plan

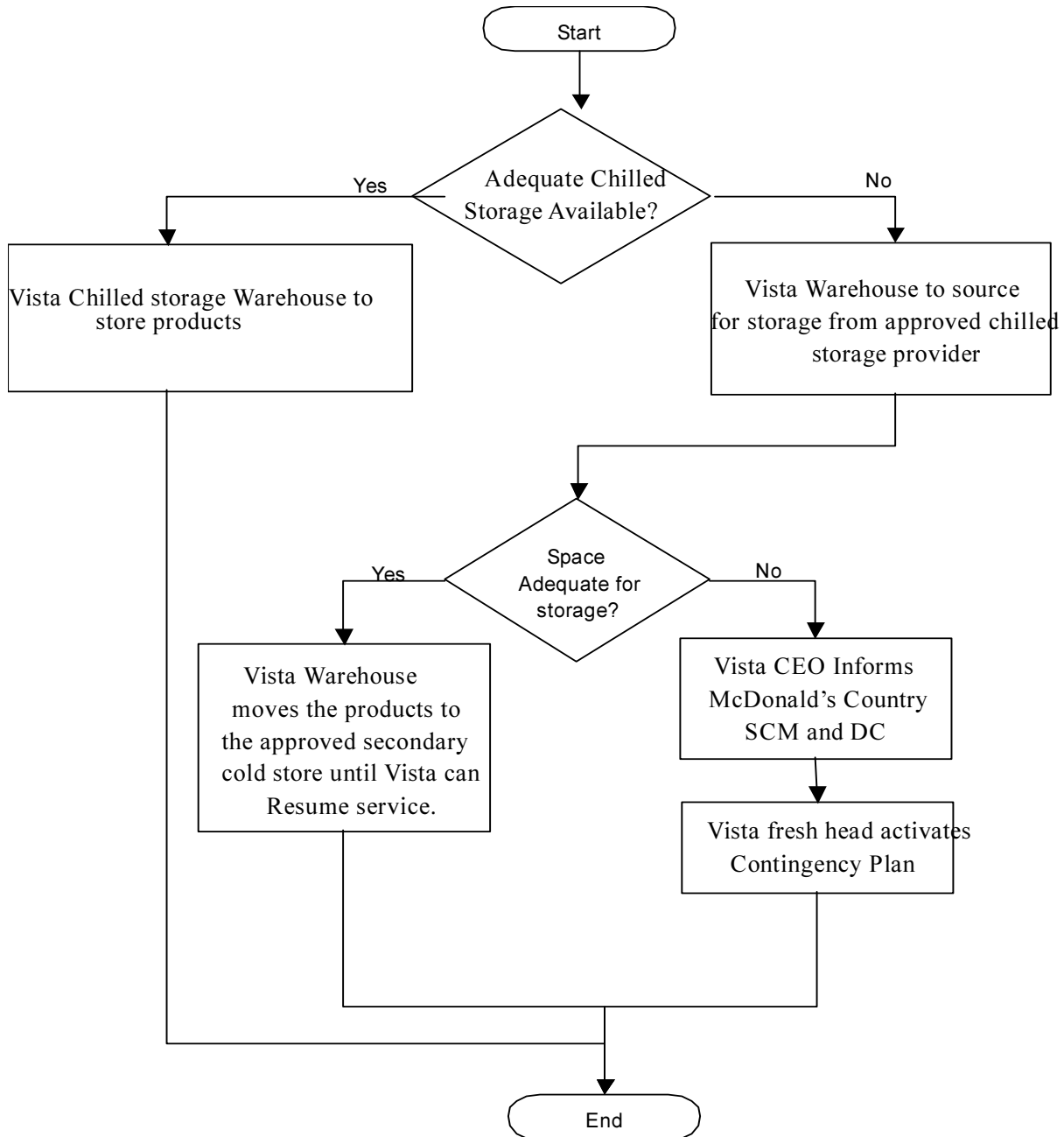
Vista Foods, Mumbai's, Vista foods South's & Vista Foods North's (Cremica Foods) contingency plan is to maintain multiple locations of chilled storages and securing the commitment of the storage service providers to allocate their space to Vista or Cremica when needed. Vista periodically inspects the chilled rooms to ensure the equipment and facility are well-maintained and in good working order.


Approved list of chilled storage service providers:

1. Snowman Cold storage
2. Food land Cold storage
3. Coldex

	VISTA PROCESSED FOODS PVT.LTD.	V/SQMS/4/01	
		ISSUE DATE:	July 2005
Contingency Plan for McDonald's India Fresh Produce		REVISION DATE:	18/06/2015
		REVISION NO.	03
		PAGE NO.	Page 27 of 41


Chilled Storage Decision Flow



	VISTA PROCESSED FOODS PVT.LTD.	V/SQMS/4/01	
		ISSUE DATE:	July 2005
		REVISION DATE:	18/06/2015
Contingency Plan for McDonald's India		REVISION NO.	03
Fresh Produce		PAGE NO.	Page 28 of 41

Chilled Storage Providers Contacts

Cold Storage/ Chiller Providers					
Region	Company	Contact Person	Contact Numbers	Backup Contact Person	Contact Numbers
WEST	R.K. Food land, Mumbai	Mr.Gurvinder	9167737093	Mr.Sanjay	91-9930368122
	Snowman, Mumbai	Mr.Yuvraj	9167788932	Mr.Anil	91-9867160978
SOUTH	R.K.Food land Bangalore	Mr. Kiran Kumar	919742225704	Mr. Mohan Sahu	91-9742225707
	Avan Agro Tech	Mr. Muniratnam	919900046080	Mr .Nanja Reddy	91-9980211839
NORTH	Food land , Noida	Mr. Sheilendra	919167737093	Mr. Lalit	91-9711149009
	Coldex, Noida	Mr. Satyaprakash	917827239344	Mr. Hardeep	91-9015109052

	VISTA PROCESSED FOODS PVT.LTD.	V/SQMS/4/01	
		ISSUE DATE:	July 2005
Contingency Plan for McDonald's India		REVISION DATE:	18/06/2015
		REVISION NO.	03
Fresh Produce		PAGE NO.	Page 29 of 41

6.5 PACKAGING MATERIAL PROCUREMENT

Over view

Risk


Packaging supply may be interrupted due to unforeseen market conditions, inaccurate forecasting, and packaging material quality problem or contamination. The following risks may materialize and cause stock out situation at Vista.

1. Quality out of specification
2. Product contamination
3. Accident or fire at the packaging plant
4. Packing material shortage
5. Equipment break down at the packaging plant

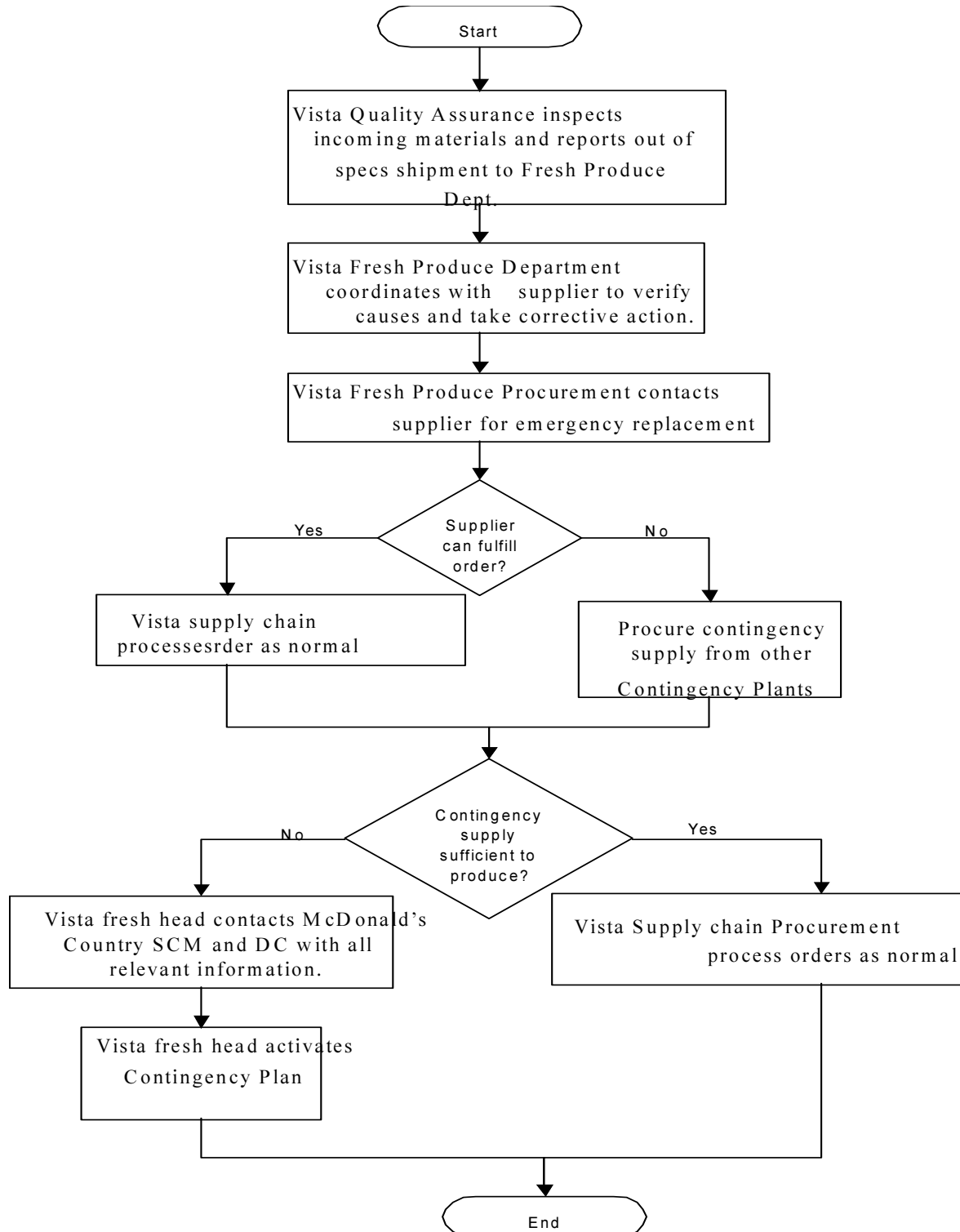
Risk mitigation includes having multiple suppliers with capabilities to produce and supply similar quality of packaging. Vista ensures product quality compliance through regular supplier facility audits, meetings and consultations. The suppliers keep mandatory safety stock for key raw material to avoid the supply shortage problem.


The major packaging SKUs are:

1. Cartons
2. Poly Bags

	VISTA PROCESSED FOODS PVT.LTD.	V/SQMS/4/01	
		ISSUE DATE:	July 2005
Contingency Plan for McDonald's India Fresh Produce		REVISION DATE:	18/06/2015
		REVISION NO.	03
		PAGE NO.	Page 30 of 41

Packaging procurement decision flow



	VISTA PROCESSED FOODS PVT.LTD.	V/SQMS/4/01	
		ISSUE DATE:	July 2005
Contingency Plan for McDonald's India		REVISION DATE:	18/06/2015
		REVISION NO.	03
Fresh Produce		PAGE NO.	Page 31 of 41

Contingency Plan

In the event of a supply interruption from one supplier, the secondary supplier will be able to produce and ship within a week's notice. The table below shows the primary and secondary (contingency) supplier for master carton and inner plastic poly bag packaging.


The polybag raw material is imported, cut into small pieces and sealed as per bag sizes.

Plant M-78 Vista Packaging Material:

Sr. #	Region	Product	Primary Supplier	Secondary(contingency) supplier
1.	West	Carton	S.S Packaging	Shivam Packaging
		Polybags-Vacuum Bags	Sealed Air	Locally available Food grade Poly bag will be used with lesser shelf-life
2	South	Carton	Anugraha Packaging	National Packaging
		Polybags-Vacuum Bags	Sealed Air	Locally available Food grade Poly bag will be used with lesser shelf-life
3	North	Carton	Noida Box Company	Keshav Packaging
		Polybags -Vacuum Bags	Sealed Air	Locally available Food grade Poly bag will be used with lesser shelf-life

Packaging Material Supplier Contact:

Zone	Product	Supplier	Person Name	Contact No.	Backup Contact	Contact No.
West	Carton	SS.Packaging	Mr.Sandeep	919820099968	Mr.Yadav	912227411318
		Shivam Packaging	Mr.Rohit	919987819000		
	Polybag	Sealed Air	Mr.Aditya	912266444222	Mrs.Kavita	919900252842
South	Carton	Anugraha Packaging	Mr.Shrinivasu	919900269850		
	Polybag	Sealed Air	Mr.Aditya	912266444222	Mrs.Kavita	919900252842
North	Carton	Keshav Packaging	Mr.Inderjeet	919818173712	Mr.Vinod	918586926704
		Noida Box Company	Mr.Chauhan	919212322146	Office	919810612112
	Polybag	Sealed Air	Mr.Aditya	912266444222	Mrs.Kavita	919900252842

	VISTA PROCESSED FOODS PVT.LTD.	V/SQMS/4/01	
		ISSUE DATE:	July 2005
Contingency Plan for McDonald's India		REVISION DATE:	18/06/2015
		REVISION NO.	03
Fresh Produce		PAGE NO.	Page 32 of 41

6.6 FREIGHT MANAGEMENT

Overview

Risk

Freight management is required to mitigate the risks of supply line interruptions through vessel or truck delay. These delays can happen due to accident, damages, or labor strike and Natural disaster.

Vista manages the inbound freight with the support of transportation companies.


The outbound is handled by McDonald's through Food land carriers and they have their own contingency plan in place.

Vista's (West & North) List of Transportation Companies:

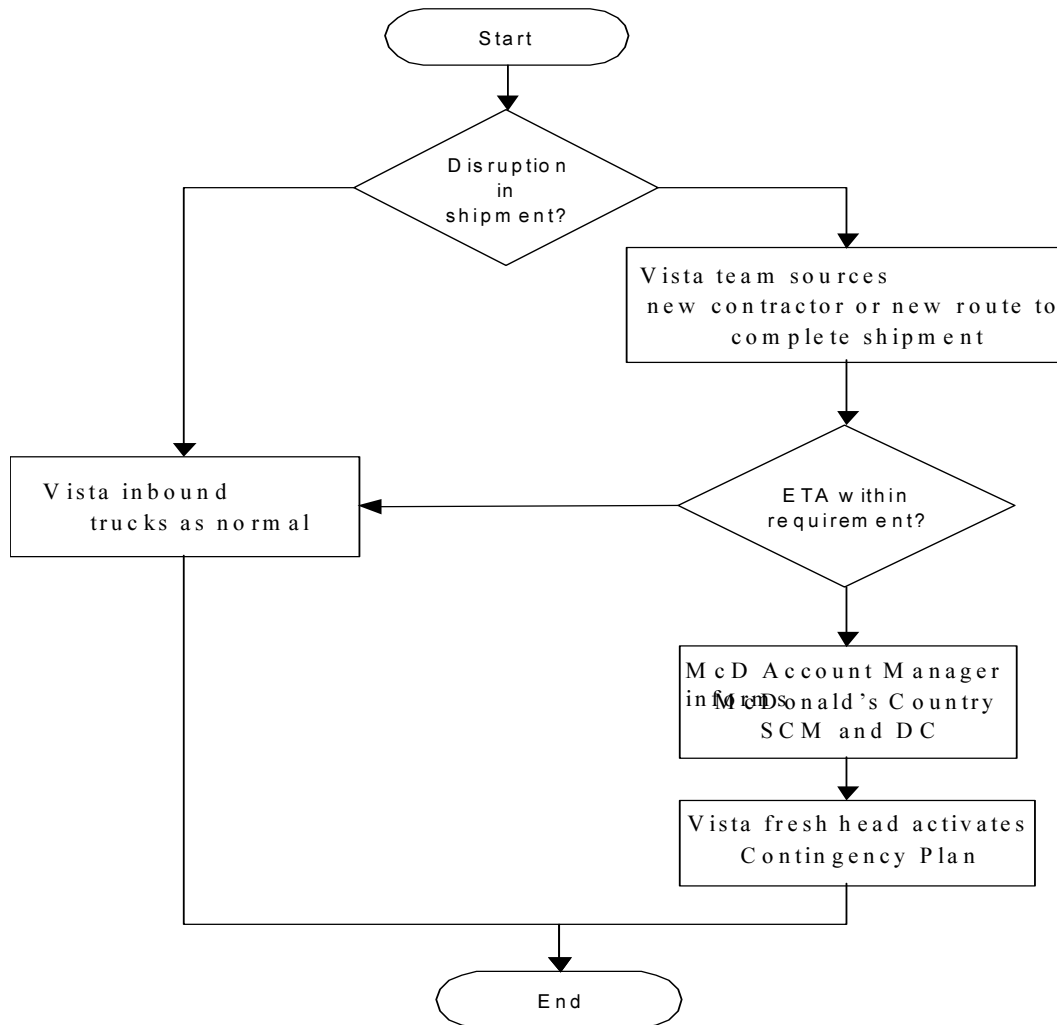
1. Snowman carriers.
2. Food land carriers.
3. Vista's hire vehicle
4. Coldex carriers


Contingency Plan

Vista's contingency plan is to use alternative source of freight and trucking companies to maintain the required ETA for all inbound shipments. These methods include changing the vessel or truck, changing the freight lines (from road to air) and changing the service providers.

	VISTA PROCESSED FOODS PVT.LTD.	V/SQMS/4/01	
		ISSUE DATE:	July 2005
Contingency Plan for McDonald's India		REVISION DATE:	18/06/2015
		REVISION NO.	03
Fresh Produce		PAGE NO.	Page 33 of 41

FREIGHT MANAGEMENT DECISION FLOW




	VISTA PROCESSED FOODS PVT.LTD.	V/SQMS/4/01	
		ISSUE DATE:	July 2005
Contingency Plan for McDonald's India		REVISION DATE:	18/06/2015
Fresh Produce		REVISION NO.	03
		PAGE NO.	Page 34 of 41

Freight Management Service Providers Contacts

Transportation Companies


Cold Storage/ Chiller Providers					
Region	Company	Contact Person	Contact Numbers	Backup Contact Person	Contact Numbers
West	Food land, Mumbai Snowman, Mumbai	Mr.Gurvinder	9167737093	Mr.Sanjay	919930368122
		Mr.Yuvraj	9167788932	Mr.Anil	919867160978
South	Food land Bangalore	Mr. Kiran Kumar	919742225704	Mr. Mohan Sahu	919742225707
North	Food land , Noida Coldex, Noida	Mr. Shailendra	919167737093	Mr. Lalit	919711149009
		Mr. Satyaprakash	917827239344	Mr. Hardeep	919015109052

	VISTA PROCESSED FOODS PVT.LTD.	V/SQMS/4/01	
		ISSUE DATE:	July 2005
Contingency Plan for McDonald's India		REVISION DATE:	18/06/2015
Fresh Produce		REVISION NO.	03
		PAGE NO.	Page 35 of 41

7.0 The key contacts for McDonald's Supply Chain Team in India and the Foodland DC at

Mumbai & Noida.

Contact Details and Positions - <u>Supply Chain India team</u>						
Sr.#	Name	Designation	Department	Location	e-mail	
1	Vikram Ogale	Sr Director	Supply Chain	Mumbai	vikram.ogale@mcdonaldsindia.com	91-9920122500
2	Praveen wagh	Dept.General Mgr	Supply Chain	Mumbai	praveen.wagh@mcdonaldsindia.com	91-9619716441
3	Pramod Limbole	Dept.General Mgr.	Supply Chain	Mumbai	pramod.limbole@mcdonaldsindia.com	91-9769929150
4	Swarup Solgaonkar	Dept.General Mgr.	Chef -Product Development	Mumbai	swarup.solgaonkar@mcdonaldsindia.com	91-9769696109
5	Vinay Hastak	General Mgr.	Quality Assurance	Mumbai	vinay.hastak@mcdonaldsindia.com	91-9819020590
6	Pranil Bhamare	Mgr.West/South India	Quality Assurance	Mumbai	Pranil.bhamare@mcdonaldsindia.com	91-8454046366
7	Abhishek Rai	Manager	Supply Chain	Mumbai	abhishek.raim@mcdonaldsindia.com	91-9987789889
8	Tushar Joshi	Manager	Admin/New Business Channel	Mumbai	tushar.joshi@mcdonaldsindia.com	91-

	VISTA PROCESSED FOODS PVT.LTD.	V/SQMS/4/01	
		ISSUE DATE:	July 2005
		REVISION DATE:	18/06/2015
Contingency Plan for McDonald's India		REVISION NO.	03
Fresh Produce		PAGE NO.	Page 36 of 41

8.0 IMPORT TRADE AND TARIFFS MATRIX.

India -Tariff and classification of Goods—Rates of Customs duty are specified in the THE CUSTOMS TARIFF ACT, 1975. The rates for edible vegetables are specified in the 7th chapter of 2nd section of the tariff act. It is selectively aligned with the harmonized system of nomenclature (HSN) which is an international nomenclature which has been adopted by more than 130 countries including India for international trade between the member countries.

The edible vegetables are covered / classified under Chapter – 7 heading – Edible vegetables and certain roots and tubers.

Local Excise tariff details –

There is no excise on fresh agricultural produce

Imports

Custom tariff details --

Tariff Item	Description of goods	Unit Standard	Rate of duty Preferential Areas	
			(3)	(4) (5)
(1) 0704	(2) LETTUCE (<i>LACTUCASATIVA</i>) AND CHICORY (<i>CICHORIUM SPP</i>), FRESH OR CHILLED <i>Lettuce:</i>			
0705 11 00	Cabbage lettuce (head lettuce)	kg.	30%	20%


Quarantine Regulation

The plant quarantine activities in the country are regulated through Plants, Fruits, Seeds (Regulation of Import into India) Order, 1989 notified under the DIP Act, 1914 (A Bill to prevent the introduction of quarantine pests in India by regulating the importation of plants, plant products and other objects)

Being the signatory to the International Plant Protection Convention (IPPC), India is obliged to have a National Plant Protection Organization (Central Regulatory Agency) responsible for meeting international obligations relating to phytosanitary measures.


In the Schedule VI of the said Order Plant Quarantine (Regulation of Import into India) (First Amendment), Order, 2007

Sl.no. (1)	Plant species (2)	Category of plant material (3)	Country of origin (4)	Additional declarations required to be incorporated into Phytosanitary Certificate (5)	Special conditions of import (6)
420.	<i>Lactuca sativa</i> (Lettuce)	Fresh vegetable for consumption	Thailand	Nil	Freedom from soil

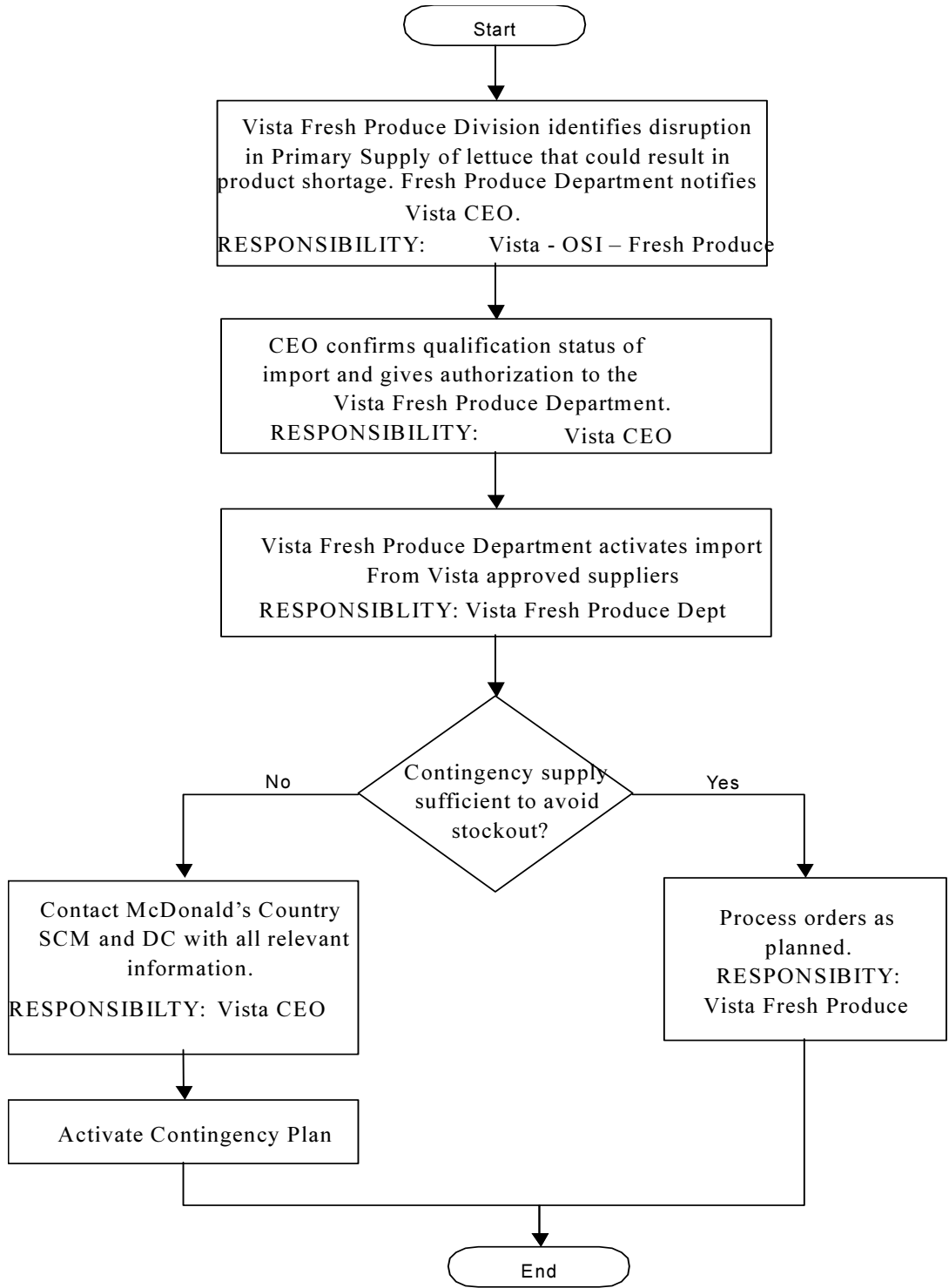
	VISTA PROCESSED FOODS PVT.LTD.	V/SQMS/4/01	
		ISSUE DATE:	July 2005
Contingency Plan for McDonald's India		REVISION DATE:	18/06/2015
Fresh Produce		REVISION NO.	03
		PAGE NO.	Page 37 of 41


Quarantine Regulation for Fresh Iceberg Lettuce Import:

Country of Origin	Additional declarations required to be incorporated into Phytosanitary Certificate	Special conditions of import
Thailand	NIL	Freedom from Soil
Lebanon	Free from: (a) Chrysodeixis chalcites (golden twin-spot moth) (b) Henosepilachna elaterii (melon (ladybird) beetle) (c) Liriomyza huidobrensis (serpentine leafminer) (d) Nasonovia ribisnigri (currant-lettuce aphid) (e) Spodoptera littoralis (cotton leaf worm) (f) Helix aspersa (common snail) (g) Beet western yellows virus (turnip(mild) yellows)	(i) Free from soil and other Plant debris. (ii) Fumigation with Methyl bromide @ 32 g/cu. M for 2½ hrs at 21°C and above under NAP and the treatment to be endorsed on Phytosanitary certificate.
Egypt	Free from: (a) Bemisia tabaci (B biotype) (silver leaf whitefly) (b) Chrysodeixis chalcites (golden twin-spot moth) (c) Henosepilachna elaterii (melon (ladybird) beetle) (d) Spodoptera littoralis (cotton leaf worm) (e) Helix aspersa (common snail) (f) Phytophthora cryptogea (tomato foot rot)	(i) Free from soil and other plant Debris. (ii) Fumigation with Methyl bromide @ 32 g/cu m for 2½ hrs. at 21°C and above under NAP and the treatment to be endorsed on Phytosanitary certificate.

	VISTA PROCESSED FOODS PVT.LTD.	V/SQMS/4/01	
		ISSUE DATE:	July 2005
Contingency Plan for McDonald's India		REVISION DATE:	18/06/2015
Fresh Produce		REVISION NO.	03
		PAGE NO.	Page 38 of 41

RAW PRODUCE IMPORT DECISION FLOW:



	VISTA PROCESSED FOODS PVT.LTD.	V/SQMS/4/01	
		ISSUE DATE:	July 2005
Contingency Plan for McDonald's India		REVISION DATE:	18/06/2015
Fresh Produce		REVISION NO.	03
		PAGE NO.	Page 39 of 41


Fresh Lettuce Import: Approved Countries by P.Q.I.

1. *Thailand*
2. *Egypt*
3. *Lebanon*

Fresh Produce Importer Contacts:

Import Agent from Thailand			
Company	Contact Person	Contact Numbers	Status
Ahuja Vegetables, Delhi	Mr. Rinku Ahuja	+91-9891320486	Tested
Thailand based business man, Bangkok	Mr. Sachdeva,	+66 816706429	Not Tested
Venkateshwara Logisitics, Bangalore	Mr. Pulkeshwan	+91-9880716566	Not Tested
Kolkata based trader	Mr. Mahapatra	+91-9830040180	Tested
Shradhanjali Agritech	Mr. Nath Ms Sunita Nath	+91-9312704138 +91-9312704098	Tested

Lead time to activate – 1 Day notice with Advance

	VISTA PROCESSED FOODS PVT.LTD.	V/SQMS/4/01	
		ISSUE DATE:	July 2005
Contingency Plan for McDonald's India		REVISION DATE:	18/06/2015
		REVISION NO.	03
Fresh Produce		PAGE NO.	Page 40 of 41

9.0 SEEDS PROCUREMENT

Risk

Iceberg Lettuce seeds are imported in bulk by the supplier and locally re-packed and supplied to growers. Lettuce production can get interrupted due to stock out of seeds at supplier's end which can happen due to;

1. Inaccurate forecasting or sudden surge in usage
2. Seed production failure
3. Strike labor / transportation / Floods / Earthquake /Fire etc
4. Changes in quarantine / phytosanitary regulations
5. Rejection of imported material by quarantine dept


Contingency plan

Contingency plan is to maintain alternate seed sourcing options;

Local Sources: There is only one local source for the approved seed variety – RAIDER

There are alternate local suppliers of different varieties of lettuce seeds

Seed Supplier				
Company	Contact Person	Contact Numbers	Backup Contact Person	Contact Numbers
Rijkzwaan Seeds, Bangalore	Venugopal Reddy	+91-9686688393	Giri	+91-9845033133
Genetic Seeds, Bangalore	Deepak Shastri	+91-9845262287		
Monsanto Seeds India	Umesh Kulkarni	9004000540		

	VISTA PROCESSED FOODS PVT.LTD.	V/SQMS/4/01	
		ISSUE DATE:	July 2005
Contingency Plan for McDonald's India		REVISION DATE:	18/06/2015
Fresh Produce		REVISION NO.	03
		PAGE NO.	Page 41 of 41

Contingency plans will be tested in set frequency (Once in year) in Attached format

Format

Overview

Reason

Assumptions

Theory

Outcome

Conclusion

Contingency Level Holdings

Assets

Follow Up Actions

Determine if any other supply options can be established.

Acknowledgements

We would like to recognize and thank **Name of the plant that fulfilled the requirement** for their assistance in completing this mock contingency exercise.